

résidence ESKOLA

64310 Sare

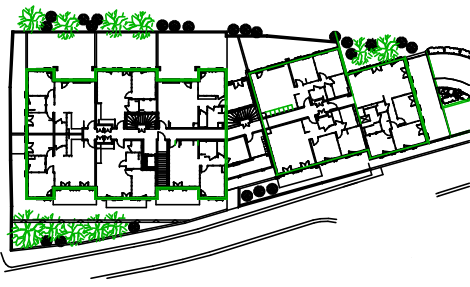
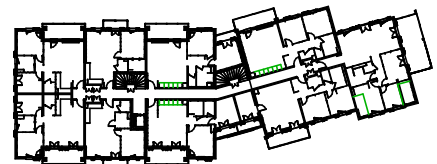
Sccv HARITZA

INDO IMMO
Côte Basque

05 rue de hayet
64500 saint jean de luz

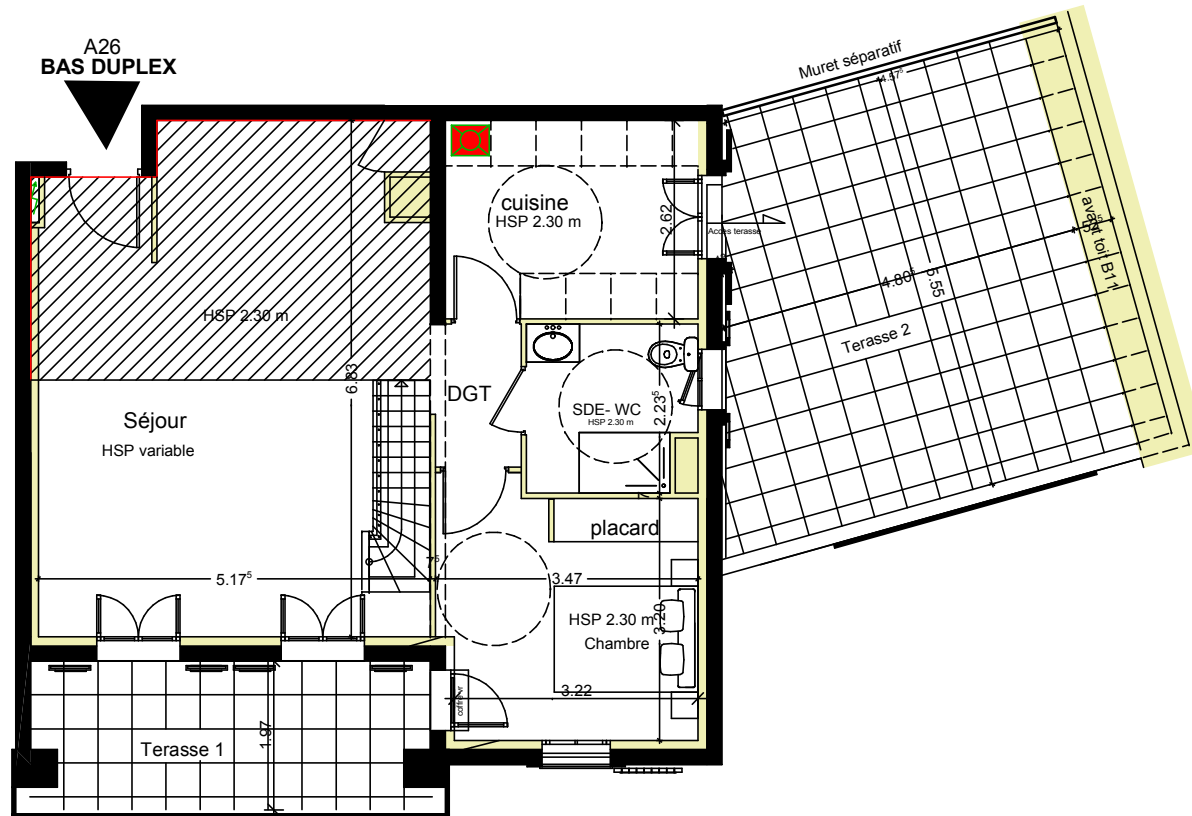
LOT A26

R+2 T4 duplex

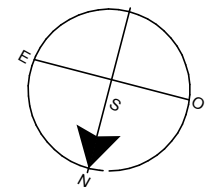


aranabereziartua
architecture

A26
BAS DUPLEX

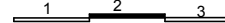


option 2 chbres en etage



séjour/salon	33.40 m ²
Chambre 1	11.18 m ²
cuisine	8.70 m ²
SDE- WC	4.77 m ²
DGT	2.14 m ²
Total surfaces bas duplex	60.19 m²

Echelle 1/100°



le présent document est susceptible de modifications techniques et administratives

le 13 novembre 2018

palier dgt	10.95m ² dont 9.35m ² H> 1.80 m
Chambre 2	07.40 m ² dont 6.20 m ² H>1.80m
Chambre 3	10.30 m ² dont 8.00 m ² H>1.80m
SBE 2	3.40 m ² dont 3.40m ² H> 1.80 m
cellier comble	3.70 m ² dont 0.00 m ² h> 1.80m
Total haut duplex	37.05 m² dont 27.35 m² h>1.80m
sous total surfaces H>1.80 m	87.54 m²
surfaces H< 1.80m	9.70 m ²
Total général surface A26	97.24 m²
Total général surfaces terrasses 1 et 2	40.40 m ²